



**BAW-SERIES
ELECTRICALLY ACTUATED
2-3-4 WAY HEATED BALL VALVES
AND VALVE ARRAYS**

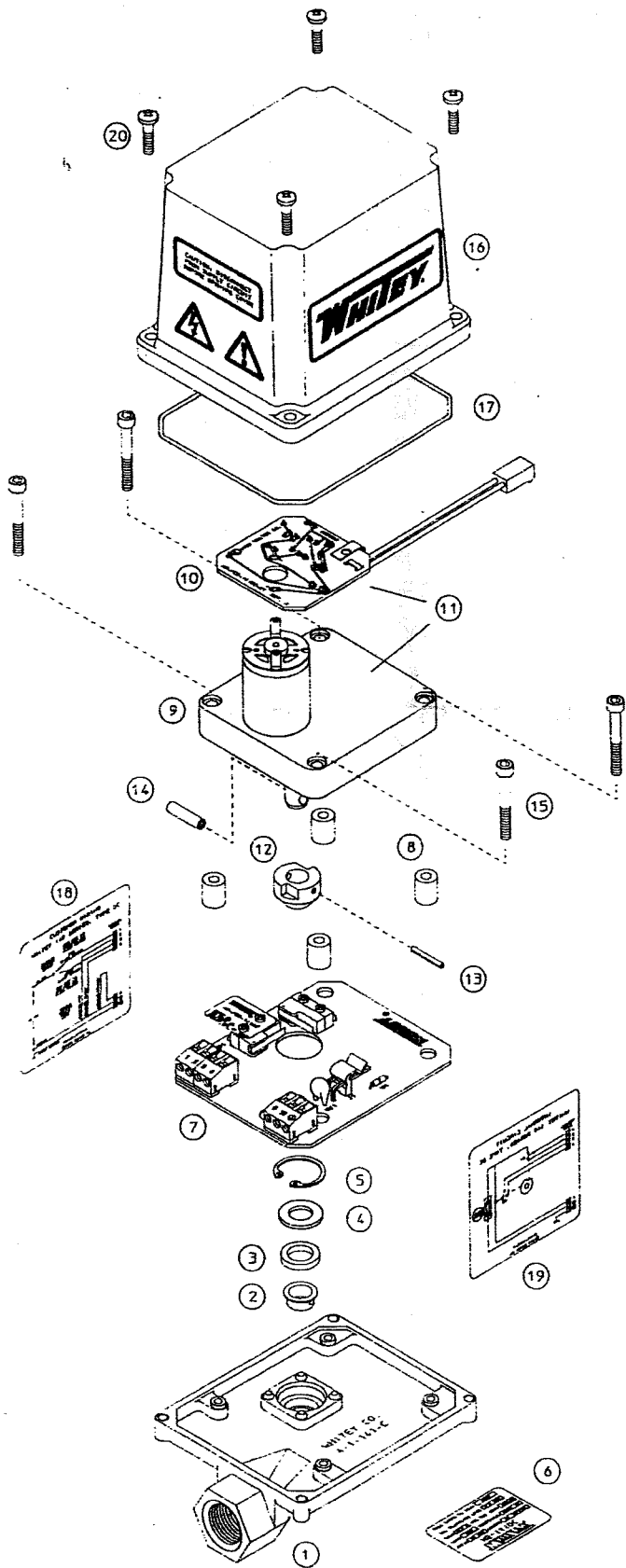
Contents:

Pg 1, 2, 3 – 2-4 Way Actuation

Pg 4, 5, 6 – 3-way Actuation

Pg 7, 8, 9 – Heater Wiring

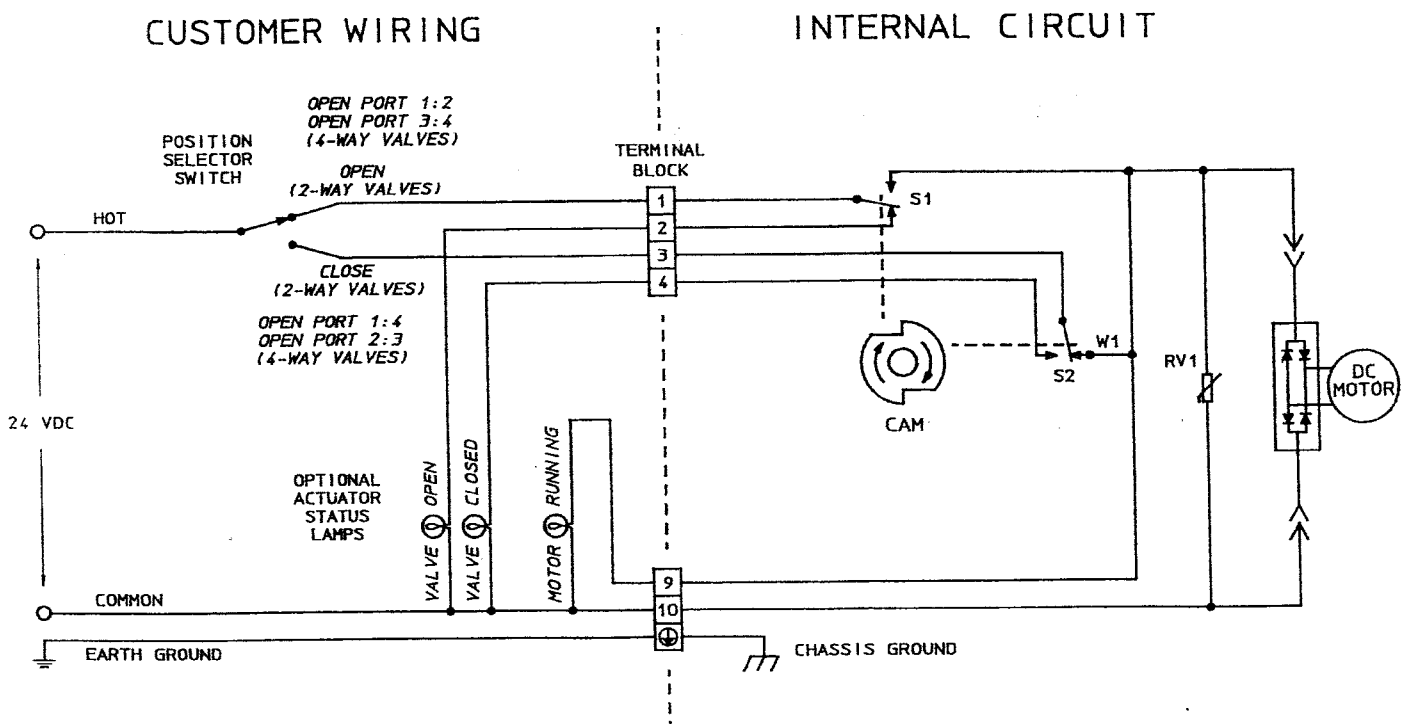
Atmo-Seal Engineering, Inc.
1091 Wheaton,
Troy, Mi 48083
www.atmoseal.com
248-528-9640



Parts List and Materials of Construction

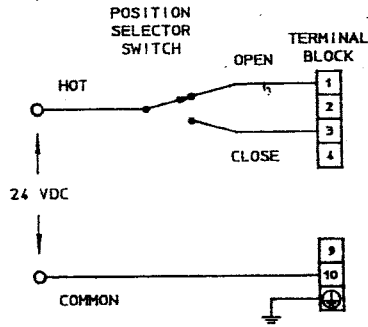
ITEM	QTY	DESCRIPTION	MATERIAL
1	1	Base	Die Cast Aluminum
2	1	Bushing	Nylon
3	1	Shaft Seal	Buna-N
4	1	Washer	Stainless Steel
5	1	Retaining Ring	Steel
6	1	Specification Label	Polyester
7	1	Assembled PC Board	
8	4	Motor Standoffs	Nickel Plated Brass
9	1	DC Gearmotor	Stainless Steel Shaft
10	1	Assembled PC Board	
11	1	Gearmotor Assembly	Stainless Steel Shaft
12	1	Dual Cam	Nylon
13	1	Spring Pin	Stainless Steel
14	1	Roll Pin	Stainless Steel
15	4	Mounting Screws	Cadmium Plated Steel
16	1	Cover	Die Cast Aluminum
17	1	Cover Seal	Buna-N
18	1	Wiring Label	Polyester
19	1	Schematic Label	Polyester
20	4	Cover Screws	Stainless Steel
	1	User's Manual	

User Wiring and Internal Circuit

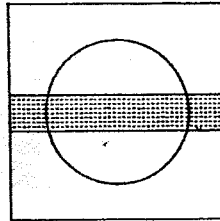


2-Way Ball Valves

CONTROL SIGNAL CONFIGURATION

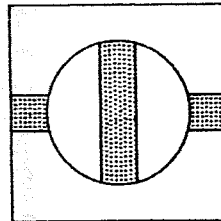
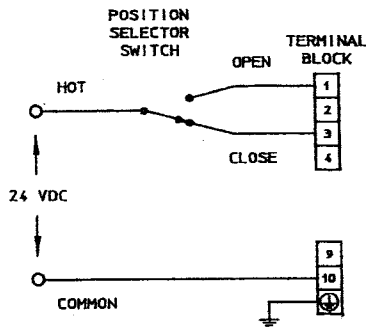
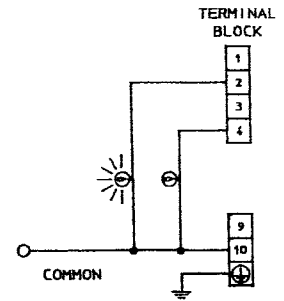


RESULTING VALVE STEM POSITION

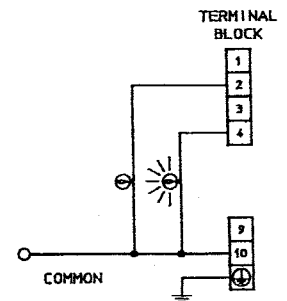


VALVE OPEN

RESULTING LAMP STATUS

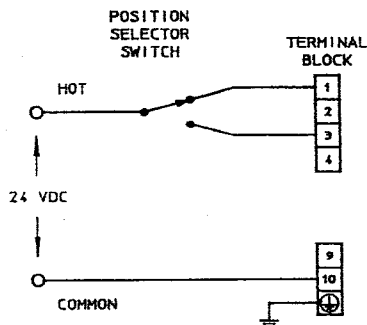


VALVE CLOSED

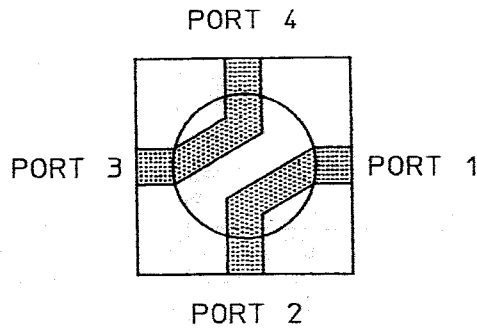


4-Way Ball Valves

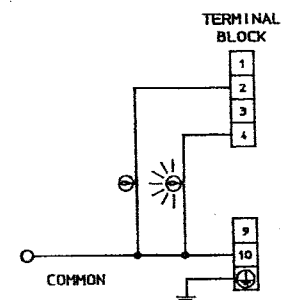
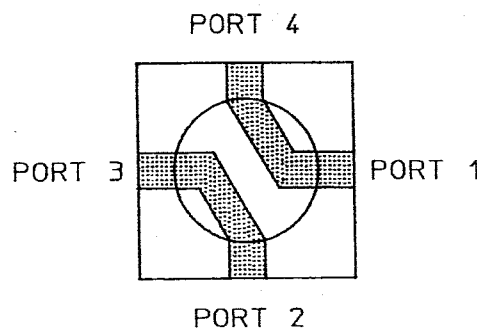
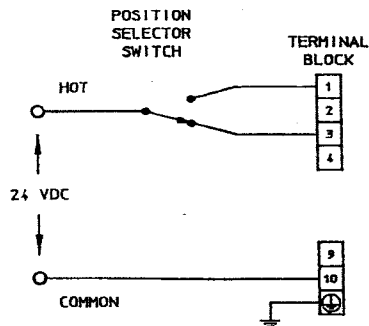
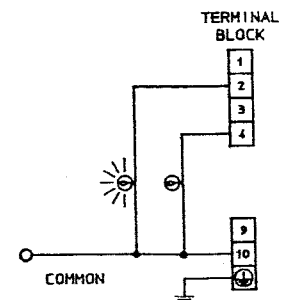
CONTROL SIGNAL CONFIGURATION

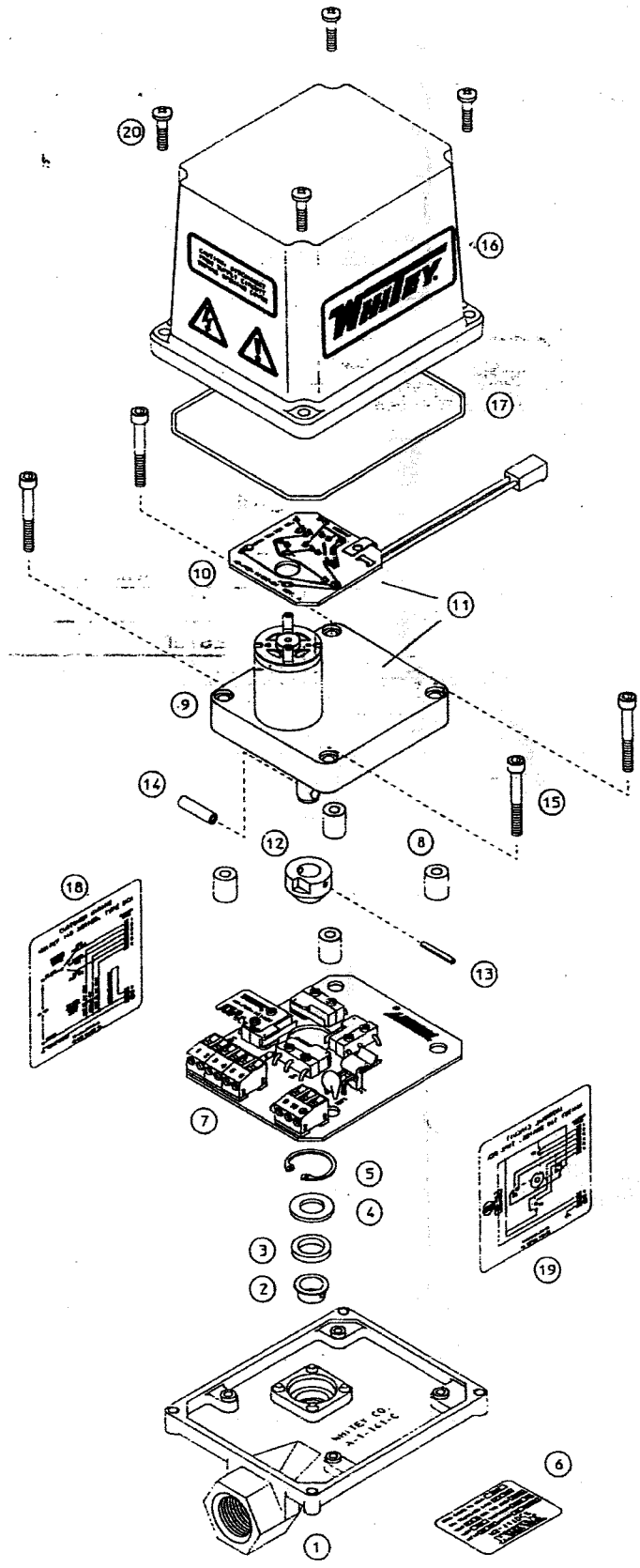


RESULTING VALVE STEM POSITION



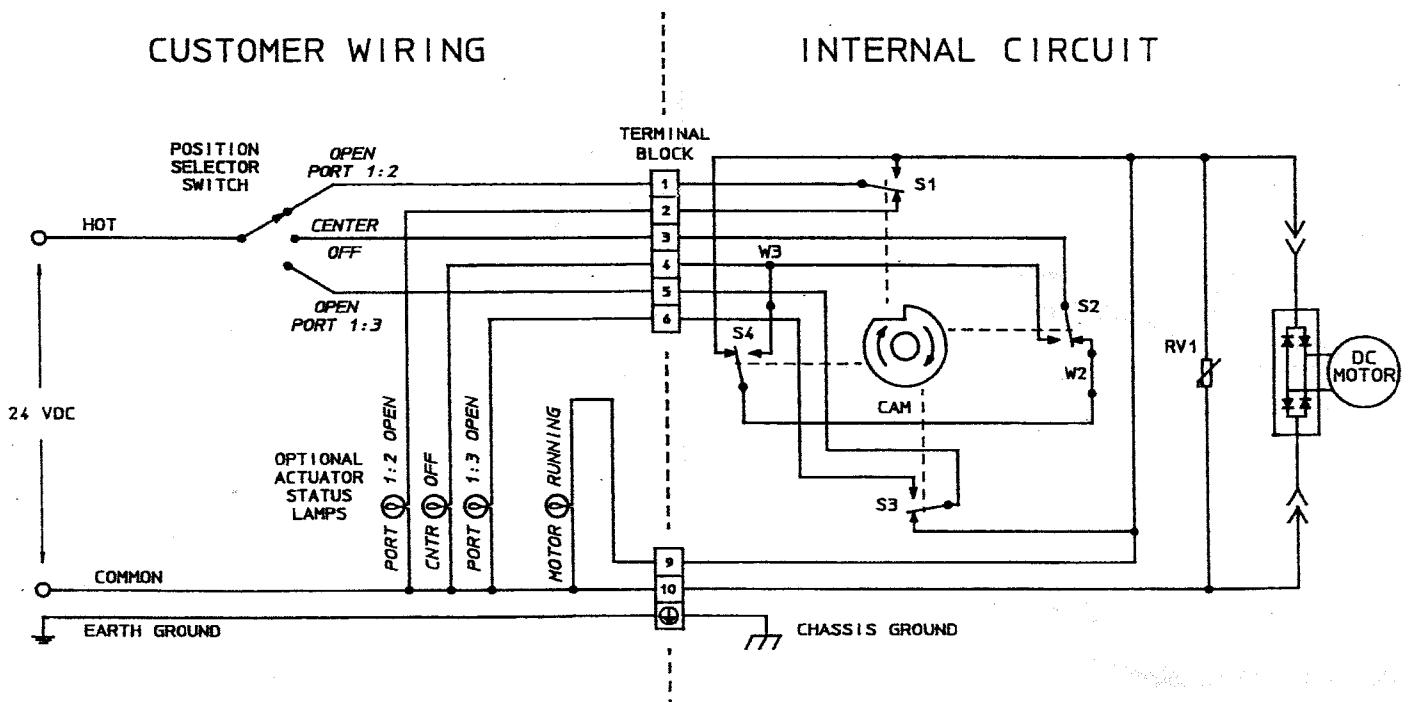
RESULTING LAMP STATUS





ITEM	QTY	DESCRIPTION	MATERIAL
1	1	Base	Die Cast Aluminum
2	1	Bushing	Nylon
3	1	Shaft Seal	Buna-N
4	1	Washer	Stainless Steel
5	1	Retaining Ring	Steel
6	1	Specification Label	Polyester
7	1	Assembled PC Board	
8	4	Motor Standoffs	Nickel Plated Brass
9	1	DC Gearmotor	Stainless Steel Shaft
10	1	Assembled PC Board	
11	1	Gearmotor Assembly	Stainless Steel Shaft
12	1	Single Cam	Nylon
13	1	Spring Pin	Stainless Steel
14	1	Roll Pin	Stainless Steel
15	4	Mounting Screws	Cadmium Plated Steel
16	1	Cover	Die Cast Aluminum
17	1	Cover Seal	Buna-N
18	1	Wiring Label	Polyester
19	1	Schematic Label	Polyester
20	4	Cover Screws	Stainless Steel
	1	User's Manual	

User Wiring and Internal Circuit



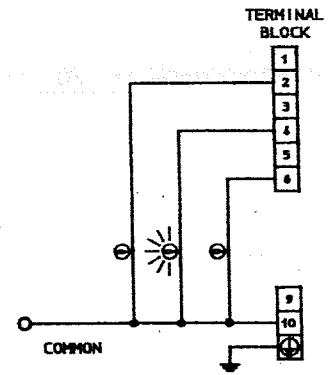
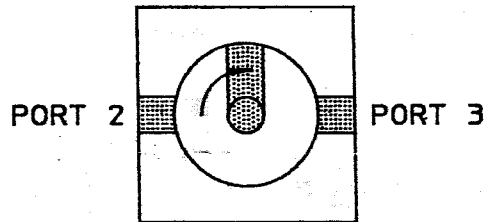
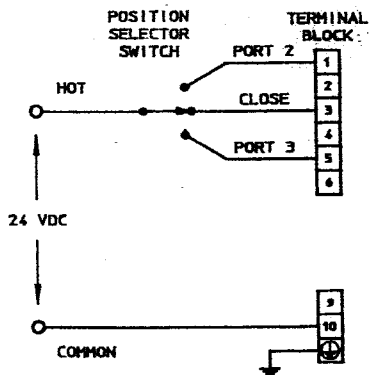
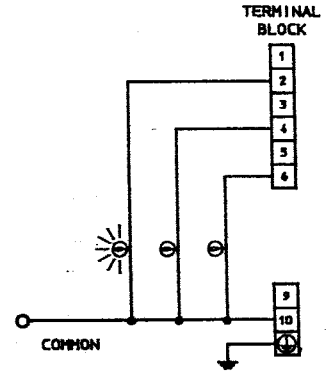
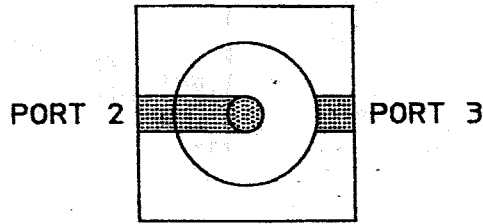
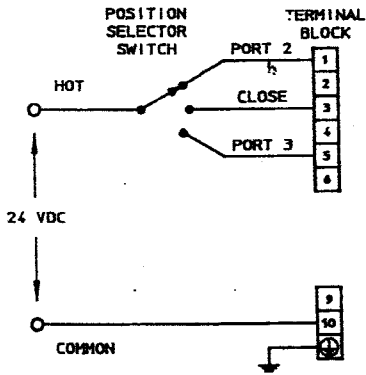
Valve Stem Position vs. Applied Control Signal

3-Way Ball Valves

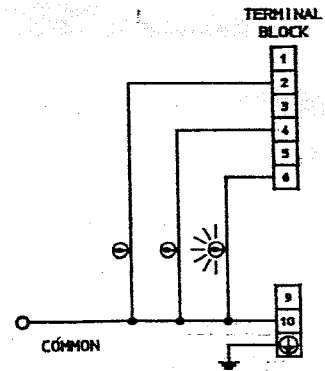
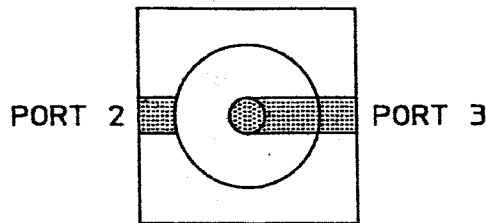
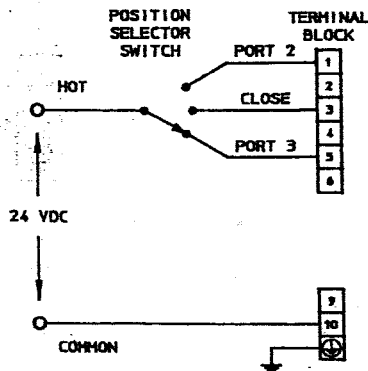
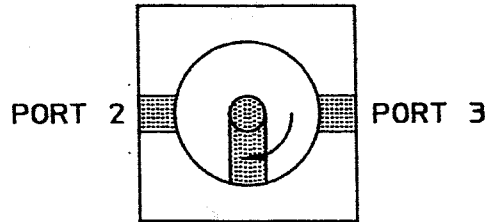
CONTROL SIGNAL CONFIGURATION

RESULTING VALVE STEM POSITION

RESULTING LAMP STATUS



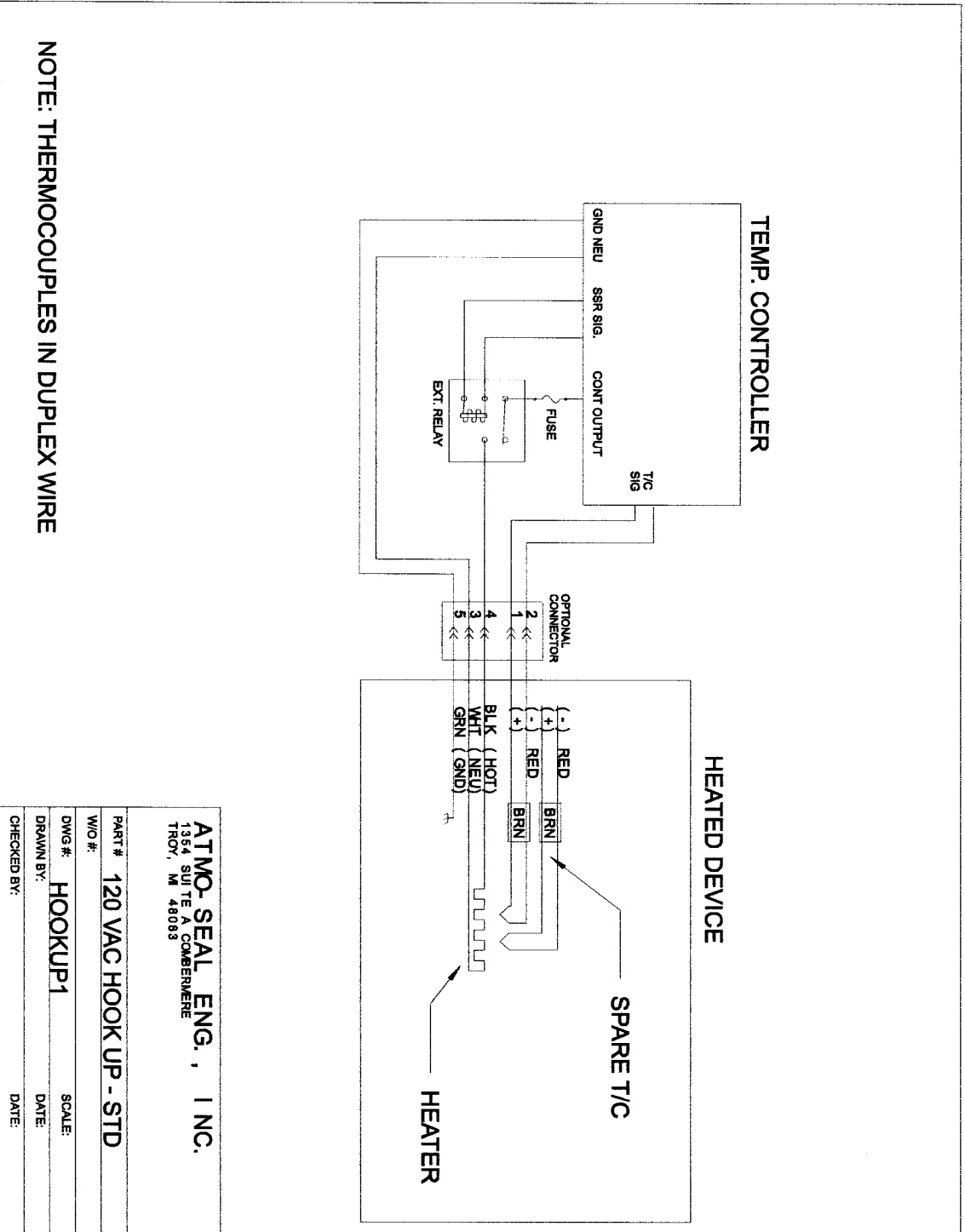
- OR -





ATMO/SEAL, INC.

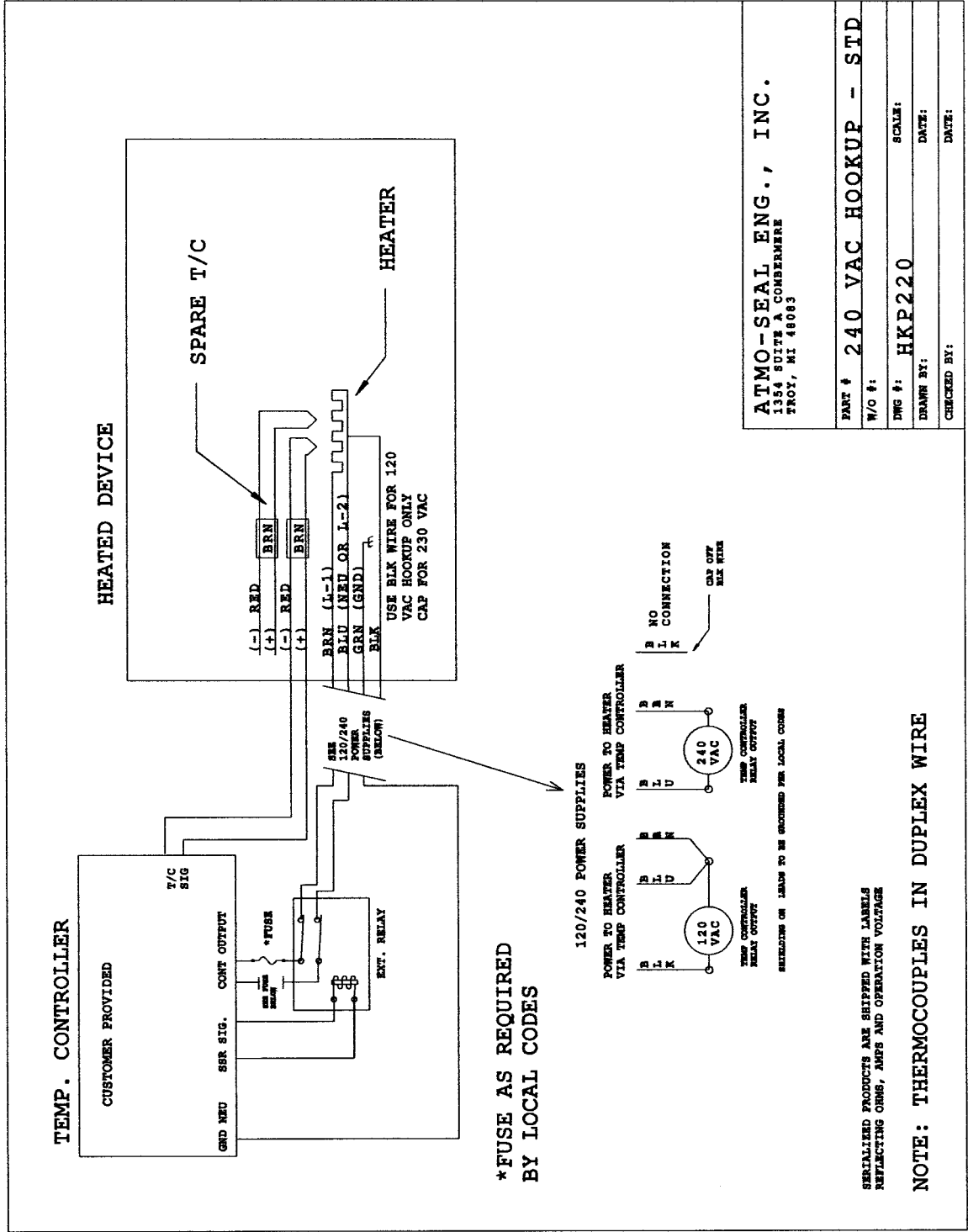
Emissions Sample Transport Systems
 1091 Wheaton Ave. Troy, MI 48063
 248-528-9640 fax 248-528-9643
 www.atmoseal-eng.com



Information contained on this or any other Atmo-Seal document is considered to be confidential and proprietary. Distribution of this or Atmo-Seal material to outside agencies without the written permission of an authorized Atmo-Seal representative is strictly prohibited.



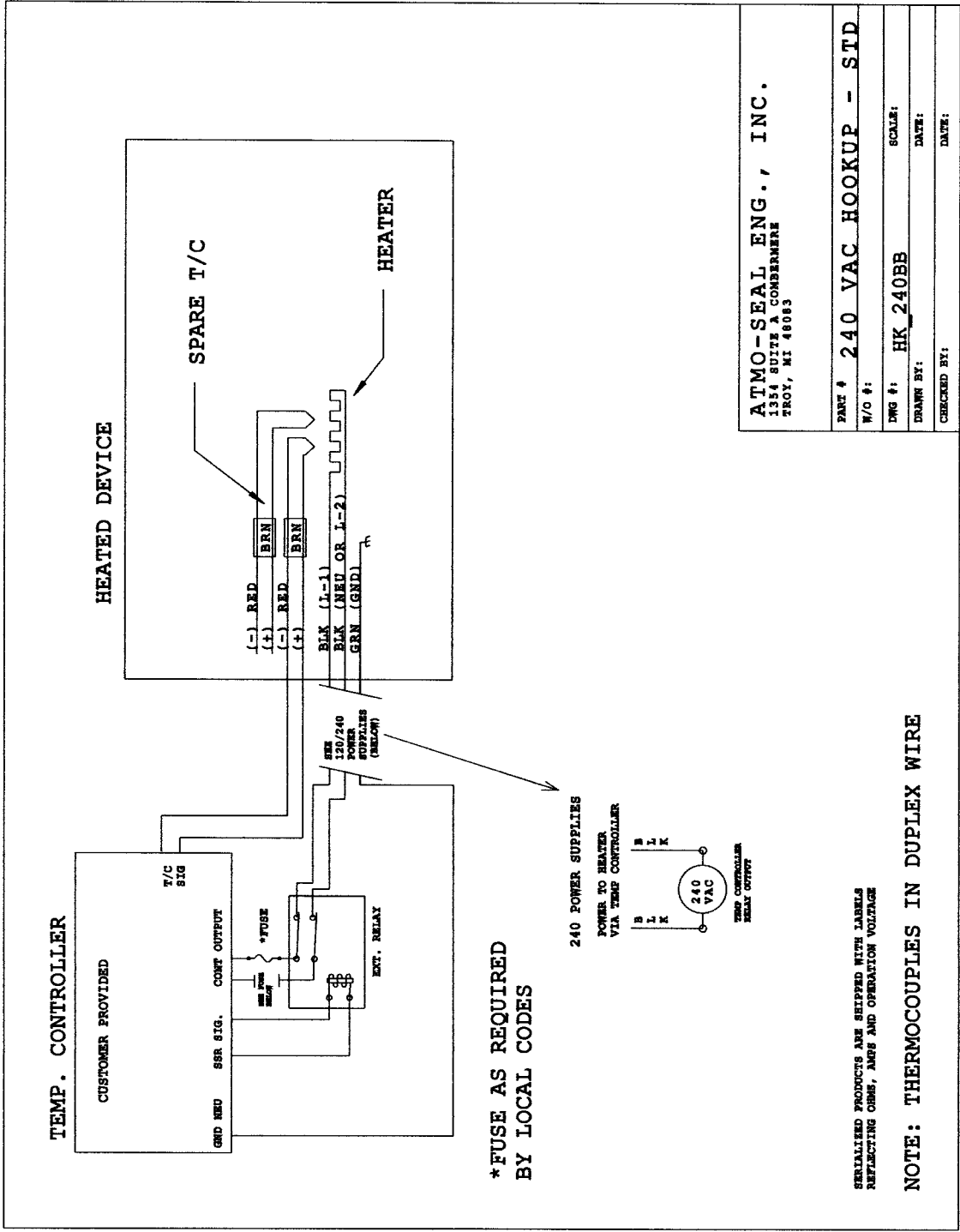
Emissions Sample Transport Systems
 1091 Wheaton Ave. Troy, MI 48063
 248-528-9640 fax 248-528-9643
 www.atmoseal-eng.com



Information contained on this or any other Atmo-Seal document is considered to be confidential and proprietary. Distribution of this or Atmo-Seal material to outside agencies without the written permission of an authorized Atmo-Seal representative is strictly prohibited.



Emissions Sample Transport Systems
 1091 Wheaton Ave. Troy, MI 48063
 248-528-9640 fax 248-528-9643
 www.atmosseal-eng.com



Information contained on this or any other Atmo-Seal document is considered to be confidential and proprietary. Distribution of this or Atmo-Seal material to outside agencies without the written permission of an authorized Atmo-Seal representative is strictly prohibited.